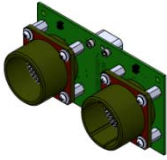
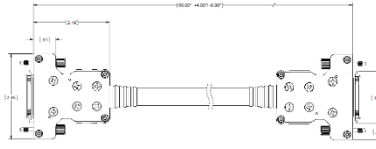




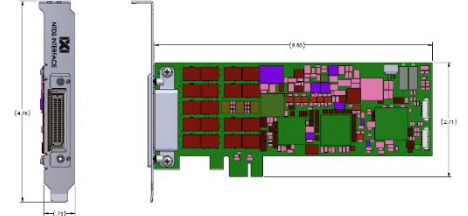
# Swift PCIe NTDS Type ABCH 120-Pin HDC Configurations



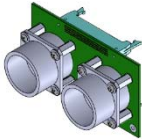
AM-SP013-HDC-00, ADAPTER,  
MIL, D38999 TO 120-PIN HDC



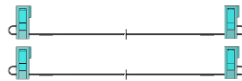
CA-F0303-HDC-060, CABLE,  
FEP 120P HDC ST TO ST, 60"



SE-02108-01, PCIe, NTDS Type  
ABCH, 120-Pin HDC, Standard  
Profile Faceplate



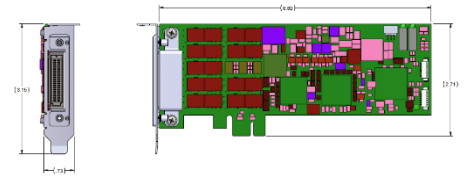
AM-SW012-00, UYK-43 Adapter,  
M28840, 92 Pin to 2x80-Pin



CA-SW080-XX, CABLE SET,  
80-PIN RIBBON  
XX = Length



TB-12080-10, CIM, 120-PIN  
HDC TO 2X80



SE-02108-02, PCIe, NTDS Type  
ABCH, 120-Pin HDC, Low Profile  
Faceplate

Model Number	Description
SE-02108-01	Swift PCIe, NTDS Type ABCH, 120-Pin HDC, Standard Profile Faceplate
SE-02108-02	Swift PCIe, NTDS Type ABCH, 120-Pin HDC, Low Profile Faceplate
SE-02108-07-LC	Swift PCIe, NTDS Type ABCH, 120-Pin HDC, Long Cable Drive (see note 3)
CA-P0303-HDC-XXX	Cable, PVC, 120-Pin HDC, Straight to Straight Connector, XXX = length (see note 4)
CA-P0303-HDC-XXX-X	Crossover Cable, PVC, 120-Pin HDC, Straight to Straight Connector, XXX = length (see note 4)
AM-SP012-HDC-00	UYK-43 Adapter, M28840 92 Pin to 120 Pin HDC
AM-SP013-HDC-00	UYK-44 Adapter, D38999 79 Pin to 120 Pin HDC
AM-SP018-HDC-00	UYK-7 Adapter, M81511 85 Pin to 120 Pin HDC
AM-SW012-00	UYK-43 Adapter, M28840, 92 Pin to 2x80-Pin
AM-SW013-00	UYK-44 Adapter, D38999 79 Pin to 2x80-Pin
AM-SW018-00	UYK-7 Adapter, M81511 85 Pin to 2x80-Pin
TB-12080-10	CIM, 120-Pin HDC to 2x80-Pin Ribbon Cable
CA-SW080-XX	Cable Set, 80-Pin Ribbon, XX = length
AM-SP008-00	120-Pin HDC Loopback Test Adapter Module

Notes:

- For further product details, please refer to IXI's sales references drawings (included).
- Conformal coating is available for an additional fee on printed circuit board assemblies.
- IXI's NTDS long cable drive version, SE-02108-07, drives NTDS Type B up to 500/152.4 (feet/meters). Standard maximum per MIL-STD-1397C is 150/45.7 (feet/meters).
- FEP cable material and additional configuration options available. Crossover Cables are used for NTDS board to NTDS board communication. Please refer to IXI 120-Pin HDC Cable Model Configurator (included).
- For additional information and/or quotation please contact IXI's Sales Team at +1-714-221-5000 or email [sales@ixitech.com](mailto:sales@ixitech.com).